

FSU031A HRC2 INHERENT HI VIS CLOSED FRONT REFLECTIVE SHIRT WITH X PATTERN AND GUSSET SLEEVES

FEATURES

- › Closed front placket
- › Two front pockets with concealed heat resistant press studs
- › Full gusset sleeves with concealed heat resistant press stud
- › Left chest pocket with pen divide
- › Chest pockets with bellow at the hem
- › Concealed placket with urea buttons
- › Gas detector loops at shoulder
- › Twin needle stitching with reinforced stress points
- › Day/ night use
- › FR perforated reflective tape
- › Domestic wash
- › Garment complies AS/NZS 4602.1:2011
- › ATPV 8+ cal/cm²
- › HRC 2 inherent protection
- › UPF 50+
- › Suitable NSW Rail

FABRIC

- › Moda-acrylic, Cotton, Para-Aramid, Nylon, AS 195gsm

SIZE

- › XS - 6XL & 8XL

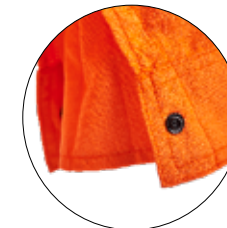
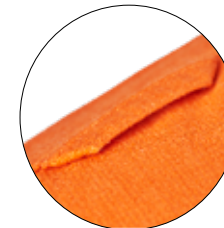
FABRIC & MATERIAL



COLORS



Orange



SIZE CHART

MEN'S SHIRTS, POLOS, OUTERWEAR - FLEECEIES, JACKET, WET WEATHER JACKET & FREEZERWEAR JACKET											
SIZE	XS	S	M	L	XL	2XL	3XL	4XL	5XL	6XL	8XL
TO FIT NECK	34/35	36/37	38/39	41/42	43/44	46/47	48/49	51/52	53/54	55/56	59/60
TO FIT CHEST	87	92	97	102	107	112	117	122-127	132-137	142-147	162-167