

# WOMENS MALI EASY FIT STRETCH TUNIC T-TOP RT262LS

Soft jersey t-top featuring pleated front and gathered back. Longer front and back hemline for extra coverage. Suitable for maternity. Easy-care, wash and wear.

## DETAILS



### MALI

95% Polyester 5% Elastane. Jersey knit structure provides stretch and comfort, combined with durable and easy-care properties. Machine wash cold, gentle cycle with like colours. Do not soak or bleach. Line dry in shade. Easy-care with little to no pressing required.



### COLOURS



### GARMENT MEASUREMENTS

SIZE	6	8	10	12	14	16	18	20	22	24	26
½ BUST (CM)	43	45.5	48	50.5	53	55.5	59	61.5	64	66.5	69
ACROSS FRONT (CM)	31.9	33.1	34.3	35.5	36.7	37.9	39.6	40.8	42	43.2	44.4
FRONT LENGTH FROM HSP (CM)	72	73	74	75	76	77	78	79	80	81	82
CENTRE BACK LENGTH (CM)	64	65	66	67	68	69	70	71	72	73	74

\*Across front measured 15cm from HSP

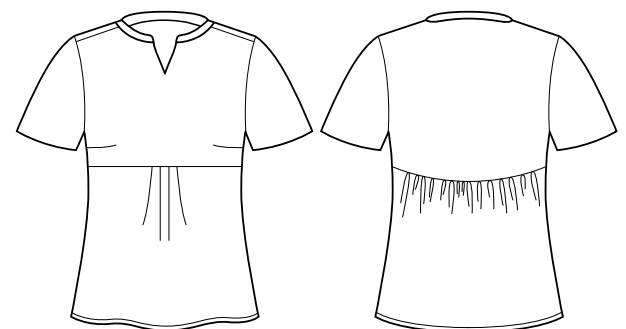
### STYLE DETAILS

- Longer curved front hem to cover bump
- Front hem and pleats will still sit flat if worn as a regular top
- Pleats at front centre to provide extra fabric volume
- Small gathers at back to provide extra room, back hem finished straight

### SUITABLE FOR / RECOMMENDED INDUSTRY

- Maternity top
- Suitable for most admin roles, and light functional roles

## SPEC DRAWING



VERA WEARS A SIZE 8 AND IS 6 MONTHS PREGNANT.

