

**YES
CHEF**

BY BIZ COLLECTION



ZEST CHEF JACKET

CH232LS WOMENS SS



BLACK



WHITE

FABRIC

- 65% Polyester, 35% Cotton Twill
- 180 GSM, UPF 50+

FEATURES

- Light-weight, vented jacket that keeps you cool and comfortable in the most demanding environments.
- Vented back and underarm mesh panels allow airflow where you need it most.
- Light, durable poly/cotton twill fabric is naturally crease resistance and easy care.
- Snap-front double-breasted style is practical and quick to put on/take off.
- Classic mandarin collar with added apron tab to hold apron in place if needed.
- 2 thermometer/pen pockets on sleeves are easy to reach whether left or right handed.
- Longer length with side splits for ease of movement.
- Womens dedicated fit is made for comfort and gently shaped for flattering contoured look.

DECORATION

- Recommend embroidery if required.

COORDINATES WITH

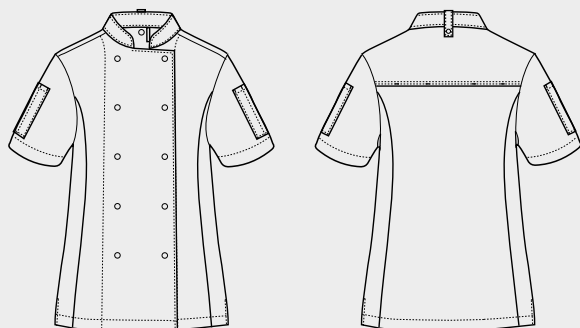
- Complete your look with pants and caps from our Yes!Chef range.

FITS LIKE

- Fits true to AUNZ standard sizing with added ease for comfort. We maintain a consistent fit across our entire Yes!Chef range making it easy to outfit staff across different styles and find the right size and fit.
- When sizing staff, as with all personalised fittings, we recommend size samples be used prior to ordering.

PERFECT FOR

- General Hospitality and Cookery Uniforms
- Restaurant, Bistro and Café Uniforms
- Hotels, B & B accommodations, Tourism & Cruises
- Tertiary Education, Tafe's, Apprenticeships and Trade courses
- Lifestyle Resorts, Golf and Social Clubs Eateries
- Sporting, Wedding and Entertainment Venues
- Cooking And Trade Events, Product Activations, Promotions



CH232LS WOMENS MODERN FIT XS S M L XL 2XL

GARMENT ½ CHEST (CM) 46 49.5 53 56.5 61.5 66.5