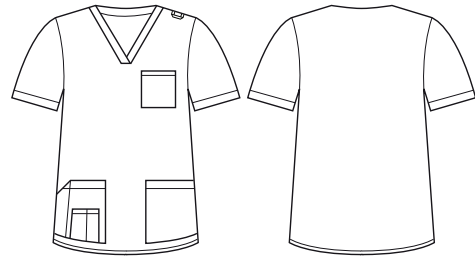




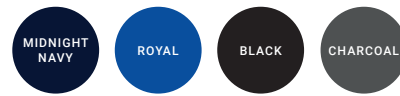
NEW

## TOKYO MENS V-NECK SCRUB TOP

CST141MS



### COLOURS



### GARMENT MEASUREMENTS

| SIZE                 | XXS  | XS   | S    | M    | L  | XL | 2XL | 3XL | 5XL |
|----------------------|------|------|------|------|----|----|-----|-----|-----|
| ½ CHEST* (CM)        | 49   | 52   | 55   | 58   | 61 | 65 | 69  | 73  | 81  |
| LENGTH FROM HSP (CM) | 79.2 | 79.9 | 80.6 | 81.3 | 82 | 83 | 84  | 85  | 87  |

½ CHEST MEASURED 2.5CM BELOW UNDERARM

### STYLE F&B

- Cargo style durable deep patch pockets on front
- Chest pocket
- Colour coded size pips
- ID badge loop on left side shoulder seam
- Side splits
- All stress points bar tacked for durability
- Traditional V-neck style, slightly tapered to eliminate boxy scrub top look

### FABRIC COMPOSITION

- 60% Cotton 40% Polyester, with SilverPlus® Antibacterial treatment.
- Anti-bacterial treatment will last for 50 washes at 60°C domestic wash
- [Read about SILVERPLUS®: www.rudolf.de/en/technology/silverplus/](http://www.rudolf.de/en/technology/silverplus/)

### CARE DETAILS

- Domestic laundry at 60°C or lower. Tumble dry on low or line dry in shade. Dry cleanable. Warm Iron.
- Tokyo has been tested for industrial washing, we recommend a 25-cycle wash test by the client prior to using as a industrial wash garment.
- Antibacterial treatment will wash off quickly and will be redundant if Tokyo is put through wash cycles hotter than 60°C.

### MATCH WITH

- Midnight Navy, Charcoal, Black all match back with other Biz Care styles in the same colour palette.
- Tokyo scrub tops can be worn as separates with the Biz Care Comfort Waist Lowers.
- Royal is in line with current market standards, not necessarily the same as Biz Collection Royal scrubs. Biz Care Royal is more vibrant and modern.

