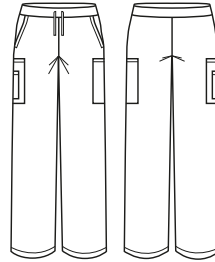


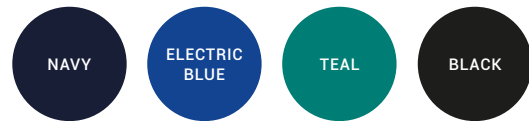


MENS SCRUB PANT

CSP946ML



COLOURS



GARMENT MEASUREMENTS

SIZE	XS	S	M	L	XL	2XL	3XL	4XL	5XL
½ WAIST RELAXED (CM)	35.5	38.5	41.5	44.5	48.5	52.5	56.5	60.5	64.5
½ WAIST STRETCHED (CM)	43	46	49	52	56	60	64	68	72

STYLE F&B

- Cargo pockets only have a back gusset, front has been stitched down for a clean, corporate look
- Large pocket can fit iPad mini (pending cover thickness)
- Utility loops on RHS cargo pocket - no bungee cord on pants
- Straight leg shape
- Elastic waist and draw string closure
- 2.5cm hem allowance

FABRIC COMPOSITION

- 96% Polyester 4% Elastane, with antistatic finish and wicking finish
- Easy-care, wash and wear performance fabric for the most demanding of environments
- Suitable for warmer climates
- Excellent Fade Resistance means 'blacks stay black' and colours stay vibrant for longer
- Soft against the skin - camisoles/t-shirts underneath is not required

CARE DETAILS

- Machine wash cold with like colours, inside out - to hold vibrancy of colours. Do not bleach, hang to dry away from sunlight, do not tumble dry. Cool iron if required, dry cleanable. Quick drying - drip dry on hanger for iron-free drying.

MATCH WITH

- Match back with men's scrub top - CST945MS
- Mix and match colours in bottoms and tops for a unique look

