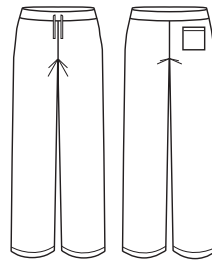




NEW

## HARTWELL UNISEX REVERSIBLE SCRUB PANT

CSP151UL



### COLOURS



### GARMENT MEASUREMENTS

SIZE	XS	S	M	L	XL	2XL	3XL	4XL	5XL	6XL
½ WAIST RELAXED (CM)	30	33.5	37	41	45	48.5	52	55.5	59	62.5
½ WAIST STRETCHED (CM)	47	50.5	54	58	62	65.5	69	72.5	76	79.5
IN LEG (CM)	82	82	82	82	82	82	82	82	82	82

### STYLE F&B

- Reversible scrubs specifically designed for commercial laundromats
- Twin needle seams, whereas Biz Scrubs are only safety stitch overlapped
- Industrial grade thread
- One back patch pocket only - no side pockets or cargo pockets on pant
- Pocket seam corners are angled to help reduce lint build up inside pockets
- 2.5cm hem allowance
- RFID chip positioning for pants:
  - Slot in back patch pocket
- Garments packaged in packs of 10, no individual poly bag

### FABRIC COMPOSITION

- 65% Polyester 35% Cotton, 160gsm plain weave.

### STANDARD CARE DETAILS

- Industrial laundry friendly. Domestic laundry at 60°C or lower. Tumble dry on low or line dry in shade. Warm iron if required.
- Care label is located inside back patch pocket - full woven care label (not printed). Has been tested at 90°C wash cycle.

### INDUSTRIAL WASHING DETAILS

- Tested at 95°C via ITS replicating standard industrial wash processes
- Tested through specific industrial washing processes at AlSCO SA, AlSCO WA, Apparel Masters New Zealand.
  - Shrinkage is within tolerance or not applicable
  - Washed between 65°C to 90°C, mix of chemical and heat wash

### SUITABLE INDUSTRIES

- Primarily designed as Theatre Scrubs and/or to be used by hospital nurses in large public and private hospitals where staff do not take uniform home.
- Industrial scrubs can be sold into other industries. For example, black lowers can be sold into catering events that require industrial launderable lowers (due to security reasons garments are provided during the shift period only).

