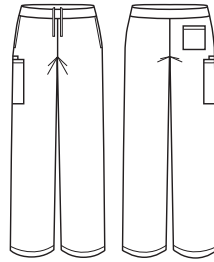




NEW

TOKYO WOMENS SCRUB PANT

CSP143LL



COLOURS



GARMENT MEASUREMENTS

SIZE	XXS	XS	S	M	L	XL	2XL	3XL	5XL
½ WAIST RELAXED (CM)	28.25	32	35.75	39.5	43.25	47	50.75	54.5	62
½ WAIST STRETCHED (CM)	43.25	47	50.75	54.5	58.25	62	65.75	69.5	77
IN LEG (CM)	78	78	78	78	78	78	78	78	78

½ HIP MEASURED 21CM FROM TOP OF WAISTBAND

STYLE F&B

- Full elastic waist band with internal draw string for extra security
- Traditional scrub straight leg style with a slightly tailored fit from knee down – eliminating boxy scrub pant look
- Colour coded size pips for easy sorting
- Cargo style patch pocket on LHS of pant
- Side seam pockets and back patch pocket
- 2.5cm hem allowance
- Non-roll elastic waist band
- All stress points bar tacked for durability

FABRIC COMPOSITION

- 60% Cotton 40% Polyester, with SilverPlus® Antibacterial treatment.
- Anti-bacterial treatment will last for 50 washes at 60°C domestic wash
- [Read about SILVERPLUS®: www.rudolf.de/en/technology/silverplus/](http://www.rudolf.de/en/technology/silverplus/)

CARE DETAILS

- Domestic laundry at 60°C or lower. Tumble dry on low or line dry in shade. Dry cleanable. Warm Iron.
- Tokyo has been tested for industrial washing, we recommend a 25-cycle wash test by the client prior to using as a industrial wash garment.
- Antibacterial treatment will wash off quickly and will be redundant if Tokyo is put through wash cycles hotter than 60°C.

MATCH WITH

- Midnight Navy, Charcoal, Black all match back with other Biz Care styles in the same colour palette.
- Royal is in line with current market standards, not necessarily the same as Biz Collection Royal scrubs. Biz Care Royal is more vibrant and modern.

