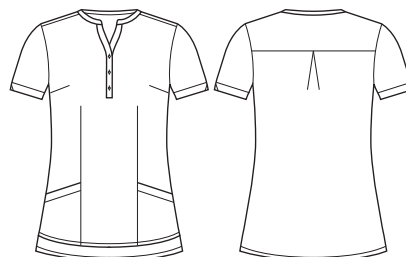




WOMENS SHORT SLEEVE TUNIC

CS949LS (PLAIN) / CS950LS (PRINT)



COLOURS (PLAIN)



COLOURS (PRINT)



GARMENT MEASUREMENTS

SIZE	4	6	8	10	12	14	16	18	20	22	24	26	28	30
½ CHEST* (CM)	46	48.5	51	53.5	56	58.5	61	66.5	69	71.5	74	76.5	79	81.5

* ½ CHEST MEASURED 2.5CM BELOW UNDERARM

STYLE F&B

- Designed with a flattering Y-neck open and mandarin collar, simple lines and no chest pocket for a clean look
- 2 durable deep front pockets
- Tunic style- designed to be worn out not tucked in
- Straight longer back hemline for extra coverage and as a styling feature
- Daisy print styles have a folded back hem to eliminate reverse side of print showing
- Triangle cut-out detailing on sleeves
- Princess seams to provide shaping from bust to waist without being restrictive
- Classic fit, perfect for all body shapes
- Dyed to match buttons for minimalistic finish, and allows monogram to stand out

FABRIC COMPOSITION

- 94% Polyester 6% Elastane – no treatments on this fabric
- 2 way stretch for extra comfort and ease of movement

CARE DETAILS

- Machine wash warm (40°C max) with like colours, inside out - to hold vibrancy of colours. Do not bleach, hang to dry away from sunlight, do not tumble dry. Cool iron if required, dry cleanable.

MATCH WITH

- Wear with matching short sleeve shirt in solid or Daisy print or ¾ sleeve shirt in solid
- Wear with Jersey T-top CS952LS for wardrobe depth

