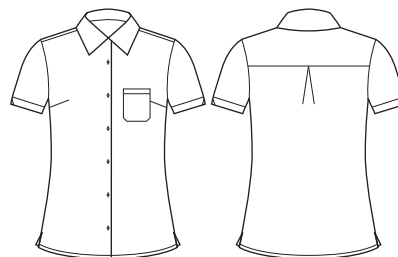




## WOMENS SHORT SLEEVE SHIRT

CS947LS (PLAIN) / CS948LS (PRINT)



### COLOURS (PLAIN)



### COLOURS (PRINT)



### GARMENT MEASUREMENTS

SIZE	4	6	8	10	12	14	16	18	20	22	24	26	28	30
½ CHEST* (CM)	44.75	46	48.5	51	53.5	56	58.5	63.5	66	68.5	71	73.5	76	78.5

½ CHEST MEASURED 2.5CM BELOW UNDERARM

### STYLE F&B

- Slightly longer hem length, can be worn tucked in or out
- Small feminine chest pocket
- Secret bust button between 2nd and 3rd buttons for extra modesty
- True short sleeve length, with triangle cut-out detailing on sleeves
- Dyed to match buttons for minimalistic finish, and allows monogram to stand out
- Classic fit, perfect for all body shapes

### FABRIC COMPOSITION

- 94% Polyester 6% Elastane – no treatments on this fabric
- 2 way stretch for extra comfort and ease of movement

### CARE DETAILS

- Machine wash warm (40°C max) with like colours, inside out - to hold vibrancy of colours. Do not bleach, hang to dry away from sunlight, do not tumble dry. Cool iron if required, dry cleanable.

### MATCH WITH

- Wear with matching tunic blouse in solid or Daisy print or ¾ sleeve shirt in solid
- Wear with Jersey T-top CS952LS for wardrobe depth

