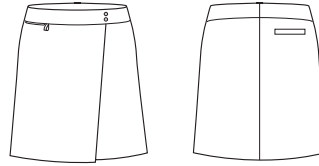




NEW

## WOMENS SKORT

CL145LS



### COLOURS



### GARMENT MEASUREMENTS

SIZE	4	6	8	10	12	14	16
½ WAIST (CM)	32.75	34	36.5	39	41.5	44	46.5
½ HIP - SHORT (CM)	45.2	46.5	48.9	51.3	53.7	56.1	58.5
IN LEG - SHORT (CM)	18	18	18	18	18	18	18
SIZE	18	20	22	24	26	28	30
½ WAIST (CM)	50	52.5	55	57.5	60	62.5	65
½ HIP - SHORT (CM)	61.9	64.3	66.7	69.1	71.5	73.9	76.3
IN LEG - SHORT (CM)	18	18	18	18	18	18	18

### STYLE F&B

- Hidden short
- Side fob pocket with loop for swipe card/keys
- All critical points bar tacked
- Back functional pocket
- Coil center back zip opening with concealed flap
- Two front buttons- style feature only
- Designed to finish at the knee
- Wide waist band for better fit through waist
- Note: this style does not have an elastic waist as per the other Comfort Lowers in the range

### FABRIC COMPOSITION

- 64% Polyester 34% Viscose 2% Elastane
- Made from a lightweight plain weave fabric, it's breathable and comfortable making it perfect for all climates and Care roles.

### CARE DETAILS

- Warm gentle machine wash 40°. Wash inside out with similar colours. Do not bleach, soak or tumble dry. Line dry in shade. Cool iron if required.

### MATCH WITH

- Mix and match with the other Comfort Lowers from the Biz Care range
- Perfect for both functional and office roles

