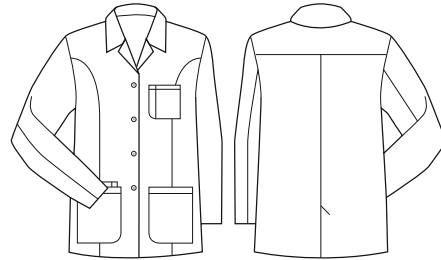




NEW

HOPE WOMENS CROPPED LAB COAT

CC144LC



COLOURS

WHITE

GARMENT MEASUREMENTS

SIZE	XS	S	M	L	XL	2XL
½ CHEST* (CM)	47	50.5	54	57.5	61	64.5
LENGTH FROM HSP (CM)	71	72	73	74	75	76
SLEEVE LENGTH FROM LSP (CM)	58	58.5	59	59.5	60	60.5

½ CHEST MEASURED 2.5CM BELOW UNDERARM

STYLE F&B

- Biz Care braded buttons
- Multiple deep and durable front pockets
- Chest pocket, with pen slot
- Internal pocket- great for phone, spectacles, wallet etc
- Internal ID label – useful when leaving coat at the office in communal location
- Headphone buttonhole inside lapel – reduce OHS issues
- Self-fabric loop inside neck seam for hanging coat
- Princess seam that runs through the front and back for added shape – less boxy lab coat look
- Back yoke for tailored fit across shoulders
- All stress points bar tacked
- Back vent opening
- Designed to be a tailored fit, go up a size if planning on wearing multiple layers underneath
- Spare button stitched inside pocket hem

FABRIC COMPOSITION

- Main: 65% Polyester 35% Cotton, 255gsm durable 3/1 broken twill weave
- Teflon® Stain Release for easy removal of most stain. Stain release will last a minimum of 20 washes at 40°C.

CARE DETAILS

- Wash warm at 40°C for longevity of stain release. Can be washed hotter but will wash off stain release quicker.

